

In This Issue

Summer Science Adventures

In the Exploration Dome

In the Exhibit Hall

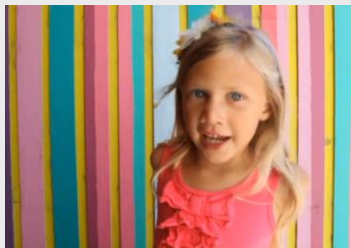
Announcements

Science Factory hits the streets

Our Donors Rock

Cheers for Volunteers

Welcome New Members



We are open daily in July & August!

10:00 am - 4:00 pm

(We are closed July 4 and July 24.)

Exhibit Hall Admission

\$4 Ages 3 - 61

\$3 Seniors

Free for Members

Exhibit Hall +

SUMMER SCIENCE ADVENTURES!

Summer science is heating up with tons of learning opportunities in our Summer Science Adventures for kids ages 3 - 14. **Many of our camps are now full**, but there are still spots in select camps for each age group including...

Investigators (Ages 3 to 5)

[Sights and Sounds](#), July 5 - 8

[Science Kaleidoscope](#), July 11 - 15 or August 8 - 12

Explorers (Ages 5 to 7)

[Desert Safari](#), July 18 - 22

[Grossology](#), August 15 - 19

[Jolts & Volts](#), August 22 - 26

Seekers (Ages 7 to 9)

[Girls' Science Lab](#), July 5 - 8

[Big Bang](#), July 11 - 15 or August 15 - 19

[Transportation Nation](#), July 25 - 29

[Energize!](#), August 22 - 26

Discoverers (Ages 9 to 11)

[Food Detectives*](#), July 5 - 8

[Creative Graphic Design*](#), August 1 - 5

[Mythbusters*](#), August 22 - 26

Adventurers (Ages 11 to 14)

[WaterBots](#), July 18 - 22

[WaterBots \(G\)](#), July 25 - 29

[Advanced Movie Makers](#), August 8 - 12

[Computer Game Design](#), August 22 - 26

Exploration Dome

\$7 Ages 3 - 61

\$6 Seniors

\$2 Members

Become a Science
Factory member [today](#).

To Register

[Download a registration form](#). Submit to Visitor Services by [e-mail](#), drop-off or mail-in (2300 Leo Harris Parkway, Eugene 97401). Call 541-682-7888 to confirm availability.

Dome Show of the Week

This summer you and your family can get a taste of our entire fulldome show library! Each weekday we'll show audiences **Seasonal Stargazing** at **1:30pm**, and a new, featured **Dome Show of the Week** at **2:00pm**. Plus, catch multiple showings on Saturdays and Sundays. [See our show schedule here](#).

Dome Show of the Week Schedule

June 27 - July 2: [Sunstruck!](#)

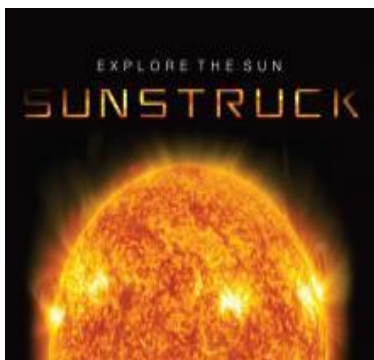
July 3 - 9: [Astronaut](#)

July 10 - 16: Double Feature - [Solar Quest](#) & [Sizing Up Space](#)

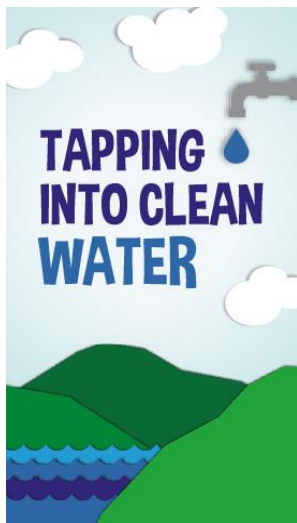
July 17 - 23: [Back to the Moon - For Good](#)

July 24 - 30: [Seven Wonders](#)

July 31- August 6: [Earth, Moon & Sun](#)



In the Exhibit Hall



We are now featuring a **Science Sampler** this summer, including the new bilingual mini-exhibition **Tapping into Clean Water!** Families can plunge into water science and explore how clean water gets to your home. This unique mini display is part of local efforts to promote the **Value of Water**, a national campaign by the U.S. Environmental Protection Agency and the American Water Works Association.

Tapping into Clean Water was developed and supported by the professionals at [EWEB](#), [SUB](#), [Rainbow Water District](#) and the [Science Factory](#). Additional support is generously provided by [Cafe Yumm!](#)

Announcements

#EMMF16: The 5th Annual Eugene Mini Maker Faire was a smashing success! We appreciate all of our visitors, makers, partners and event sponsors who came together to put on this awesome event! If you want to re-live the action, check out this story on [KMTR](#) and peruse this fantastic album of photos from [SeenEugene](#). 'Like' us on [Facebook](#), follow us on [Twitter](#) or visit [eugenemakerfaire.com](#)

to stay in touch!



A Nation of Makers: The White House welcomed one maker-ambassador from every state in June to explore ways that makers in all 50 state could lift up local makers, connect more individuals, and learn from Federal agencies on how to connect makers with existing and recently announced initiatives. Our **Interim Executive Director Nick Spicher** was selected to champion the President's Nation of Makers Initiative back in Oregon and build out a more robust network of makers locally!

Blue Star Families: We offer **free admission** to active duty military and up to 5 family members through Labor Day weekend. Find out more by visiting [arts.gov/bluestarmuseums](#).

Win the Day: Get your ducks in a row - park at the Science Factory during home football games at Autzen this fall! We are able to provide this service thanks to our close proximity to the stadium, and your purchase of a seasonal parking pass supports our educational programs - **WIN/WIN!** Visit our



[website](#) for more information, or call Kim at 541-682-7896. The first game is September 3 vs. UC Davis.

Great Clean-Up: While the museum was closed for a week in June, staff and volunteers worked hard to spruce up the Exhibit Hall and classrooms. Thanks to **Forrest Paint Company** for their generous paint donations, to **Environment Control** for cleaning the carpets, and to all the helpers who donated their time and supplies towards the effort.



Science Factory hits the streets!



Summer Reading

Join us at your local library this summer. We'll explore the Sun as one of the many stars in the sky and have a variety of activities for families, including crafts to make and take home.

Library	Date	Time
Springfield	July 8	2:00pm
Junction City	July 13	12:30pm
Eugene Downtown	July 26	1:00pm
Bethel	July 27	11:00am
Sheldon	July 27	2:00pm

At the Fair! July 22 - 24

Find us in Discovery Park as part of the STEM festival at the [Lane County Fair](#). Solve brain teasers, and get a sneak peek at some of the newest areas of biotech research. We'll be there all weekend!



Our Donors Rock

Big thanks to **David Armstrong** and **Steve Eichhorn** for participating in the United Way donation matching program to support the Science Factory.

We appreciate **Ray Hull**, **Don & Hyde Lown**, **Jay Moseley**, **Jack O'Donnell**, **Judy Shurts**, and **Peggy Whalen** for contributions in June.

We are grateful to **Georgia-Pacific Chemicals LLC** and **The Grainger Foundation** for supporting upcoming exhibitions.

Kudos to **Thompson Landscape Company** for providing groundswork services last month.

Cheers for Volunteers

Round of applause to the **Eugene Active 20-30 Club, Madison Ball, Loni Kringle, Monica Careaga Houck, Chip O'Neal, Erin Madison, Aurora Leiferman, Miyako Iwata, Victor Rudkowsky, and Adam X** for lending a helping hand at the 5th Annual Eugene Mini Maker Faire!

Big thanks to **Ed Park, Marjory Rolling, Kevin O'Brien, Ben Camp, Matt Harris, Cathy Rainwater, Monica Careaga Houck** and **Rick Nelson** who assisting with the Great Science Factory Clean-Up in June.

We appreciate **David Grych, Ali Egging, Madison Ball** and **Corina MacWilliams** for assisting Museum visitors last month.

Kudos to **Rosemary Crafton** and **Rick Nelson** for supporting Science Factory outreach activities in June.

Thanks to **Loni Kringle** for helping with our Ready. Set. Safe. event, and **Rick Nelson** for supporting our afterschool Maker Club.

Welcome New Members! It's a brand new year of science fun with...

Talal Alajmi, Liz Baer & Janel LaBell, Jennifer Bender, April & Jeff Bernacki, Molly & Jeffrey Crow Bolt, Brittany & Wills Boothe, Jenni & David Cragun, Rong Cui & Youchang Wu, Aimee & Ryan De Lee, Denby & Paul Evans, Jennifer & James Gardner, Kimberly Gough & Ralph Bradley, Katie Hairgrove & Marianne Sullivan, Apryl & Ryan Hosek, Heather Hunholz & Kim Briggs, Teresa Hurley, Rob Inerfeld & Stephanie Jennings, Daniel & Melody Kallio, Claire & Michael Last, Newt Loken, Alina & Joey Mansfield, Jonathan & Tanya McNeill, Carly & Robert Molinar, Randy Neu & Ala Amundson, Michael & Robin Owen, Sharon & David Schuman, Olivia & David Scully, Nicole Siegel, Leslie & Mark Simmons, Stephanie & Carson Smith, Jenna Summers & Dani Clark, Rebecca & Joe Walters, Robert Watada & Rosa Sakanishi, Pamela & Kurt Wolf, Jayson Yi, Curtis & Edith Young, Changhong Zhao & Jianbing Sun

2300 Leo Harris Parkway, Eugene, OR 97401

[SafeUnsubscribe™ sfmarketing@sciencefactory.org](#)

[Forward email](#) | [Update Profile](#) | [About our service provider](#)

Sent by [sfmarketing@sciencefactory.org](#)