



SCIENCE Children's Museum & Exploration Dome FACTORY



2300 Leo Harris Pkwy, Eugene OR • 541-682-7888 • www.sciencefactory.org

Exhibit Hall Hours: Wed. - Sun., 10 am - 4 pm, July & Aug. 10 am - 4 pm daily

Museum Hours

10:00 am - 4:00 pm
Wednesday through
Sunday

Special Closed Day
May 30 (Memorial Day)

[Click here](#) for admission
rates.

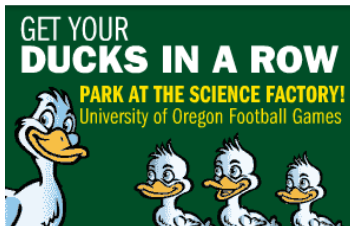
Register Now!

Grades 2 - 8
[Afterschool Maker Club](#)

Grades 4 - 6
[Girls' Science Adventures](#)

Ducks Football Parking

**2016 Season Passes on
sale now!**



Parking at the Science
Factory on home game
days is fun and easy!
Enjoy quick walking
access to Autzen Stadium
and a **guaranteed** parking
spot - regardless of arrival
time. Plus get Museum

May 2016



What do you get when you mix
underwater robots, 3D printers, Pop
Rocks and soda, cats and dogs,
tornadoes, mammoths, and a dash of
magic? You guessed it - **Summer
Science Adventures at the Science
Factory!**

Highlights include:

- Camps on timely and important topics such as alternative energy, food science and computer programming
- Scientific twists on topics that capture kids' imaginations, such as gross things, magic and urban legends
- Girl-friendly camps that give the girls freedom to discover their own passions for science and technology
- The return of Water Bots, our LEGO Mindstorms-based camp for middle schoolers: build and program robots for underwater travel
- New camps on 3D printing and

In the Exploration Dome

Experience our fulldome
planetarium theater each
Saturday and Sunday!
Visit the sun, navigate the
planets, and learn to spot
the key stars of each
season's night sky. [Learn
more.](#)

See our current shows
listed below.

[Seasonal Stargazing](#)
Saturday & Sunday
10:30 am, 12:00 pm,
3:00 pm

[Pre-K Double Feature:](#)
[Space Shapes & Ode to
the Planets](#)
Saturday
11:00 am

[Sunstruck!](#)



Saturday
2:00 pm
Sunday
11:00 am, 1:00 pm, 2:00
pm

membership (including [ASTC benefits](#)).

Early Bird Registration ends May 15. [Click here](#) to learn more.

GO DUCKS!



Enter the vibrant city of **Moneyville**, Science Factory's featured interactive exhibition, and you'll leave with money-savvy kids. Here they'll take a hands-on tour of money from its earliest form to its rise and fall in the stock market. Your kids will see money in a new way, and perhaps teach you a few things! [Learn more.](#)

Sponsored by ESCO Foundation, with additional support from Northwest Community Credit Union and Jeff Hill, Future Planning Systems

Blue Star Summer



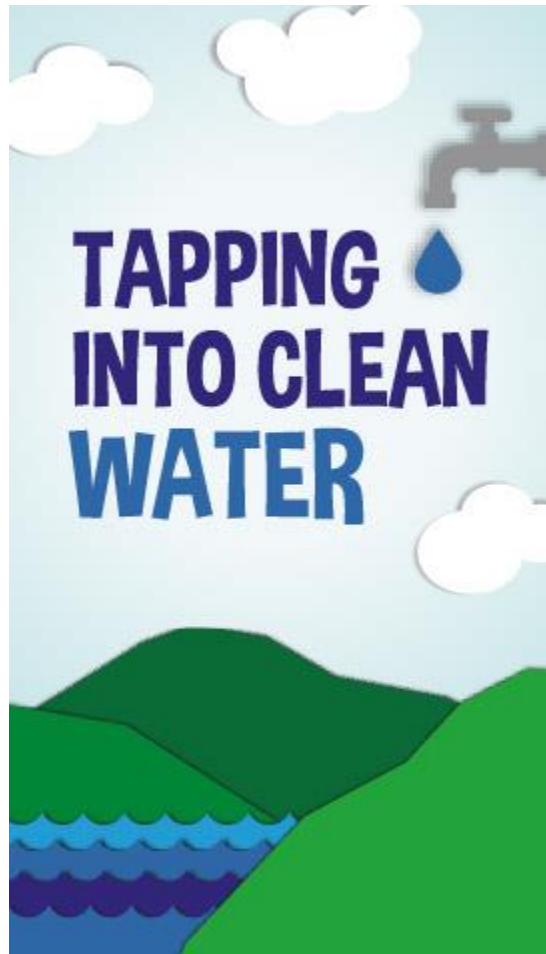
Science Factory is proud to be a Blue Star Museum!

We offer free admission to active duty military including Army, Navy, Air Force, Coast Guard,

invention using fun and engaging technology

[Click here to register today!](#)

In the Exhibit Hall



Clean Water Challenge: Help the raindrop safely through the watershed to the drinking water filtration planet. Use levers to tilt the table to move Rory the Raindrop along a clean path for water, while avoiding pollution sources along the way.

Filtration Station: How does your water get clean enough to drink? Four hands-on station explore water filtration and treatment for different water impurities. Explore how particles are removed and see slides of some microscopic organisms that are killed by the disinfection.

Watertown, USA: The goal of this game is to build a water distribution system from

FEATURED LIVE PROGRAM

Every Saturday in May at 1:00 pm

[Eclipses](#)



Next summer, on August 21, 2017, there will be a total solar eclipse visible in Oregon. On this special day, the moon will pass directly in front of the sun, blocking it completely out of view for a few short minutes. Join us to get ready for this spectacular event. Explore what causes eclipses and learn how to view the August 2017 eclipse safely!

Call for Makers



We're on the hunt for local makers, hackers, inventors, artists, techies, crafters, tinkerers, and do-it-yourselfers for our 5th annual Eugene Mini Maker Faire on Saturday, June 11.

If you or someone you

Marines, National Guard, and Reserve members, with up to five family members. Blue Star Museums is a collaboration among the National Endowment for the Arts, Blue Star Families and the Department of Defense, and more than 2,000 museums. **Benefits begin June 1.**

Find additional Blue Star Museums by visiting arts.gov/bluestarmuseums

source to tap. Players work together to provide water to homes and businesses while dealing with emergency challenges. How many happy customers will you have?

See *Tapping into Clean Water* on display as part of our Science Sampler this summer!

Sponsored by [EWEB](#), [SUB](#), [Rainbow Water District](#), and [Cafe Yumm!](#)



know has a unique project to share with the community, visit eugenemakerfaire.com to apply to present for free!

Stay Connected



This Month's Special Events

May 6: Tot Discovery Day - Flower Power

9:00 am - 12:00 pm

Spring is in the air and the flowers are in bloom! Discover the importance of different parts of flowers, find out what makes bees good at pollinating and learn how flowers absorb water from the ground. Join us for floral crafts and experiments! [Learn more here.](#)

Sponsored by [SELCO Community Credit Union](#)

May 17: Annual Members meeting

6:00 pm

All Museum members are welcome to attend. [We will elect three new members](#) to the Board of Directors. Meet the Board, and help us honor our dedicated volunteers.

May 28: Farm Food Festival

11:00 am - 3:00 pm

Plant vegetable seeds and learn what makes them grow. Explore processes of preparing and preserving food after it's been harvested. Catch demonstrations on butter and cheese making that you can try at home! Meet a few furry and feathered farm friends.

Thanks to Our Donors

Our amazing April donors were **Anonymous, David Armstrong, Steve Eichhorn, Margaret Huseman, Johan & Emel Mehlum, Jay Moseley, and Dannen Soeby.** Thank you for your support!

Businesses and organizations that supported us include **Eugene Elks Lodge #357, International Paper, Kroger/Fred Meyer Community Rewards Program, and Walmart.** We couldn't do it without you!

Thanks also to those generous supporters who offered in-kind donations: **Don Brown, Next Step Recycling, Thompson Landscape Company, and Watkinson Laird Rubenstein.**

We are especially grateful to the long list of contributors to our Scientifically Speaking Gala: **Jennifer Aleshire, William Balsom, Banner Bank, Renell & Larry Brabham, Broadway Apothecary, Don & Linda Brown, Café Yumm!, Monica Careaga-Houck, Anne & Terry Carter, Janet & Dean Cheesman, Carolyn DeMarco, Dan Egan, Judith Eisen, Joyce Fish, Becca Henry, Vern Katz & Deb Dotters, Don Lown, Lallie & Steve McKenzie, Cris & Denise Niell, Donna & Terry Niegel, Elizabeth Ness, Northwest Community Credit Union, Anne & David O'Brien, Marcia Robeson, Fria Rogers, Marjory Rolling, Brent Stone & Barbara Baldwin, and Bill & Tracey Whalen.**

Finally, special thanks to supporting members **Chris & Rebecca Demers and Duncan Rhodes & Elizabeth Farley.** [Supporting memberships](#) are a great way to help the Science Factory, and they include great member benefits!

Cheers for Volunteers

We appreciate our April Exhibit Guides: **Mia Williams, Corina McWilliams, Alison Egging, Loni Kringle, Aurora Leiferman, Emmarose McDermott, and Anna Patton.**

Big thanks to **LeeAnn Hansen** and **Emma Turnbull** for helping in the Science Factory office last month.

Round of applause for **Rick Nelson** for supporting planetarium programs and Maker Club activities in April.

Thanks to **Anna Patton** and the employees of **Thermo Fisher Scientific** for assisting on Nano Day!

Welcome New Members

Benjamin & Jessica Abbe, Cara & Joseph Capener, Stacey & Christopher Christiansen, Feng Chunhua, Mina & Bryce Collins, Christina & Willie Dancer, Chris & Rebecca Demers, Annie Dimond, Diana Estrada & Erika Garcia, Alisha & Tasha Fuller, Lynn Gutoski, Adam Harms & Alicia Evans, Michelle Hewitt & Ashley Evans, Shannon Holding, Melanie Huskey & Mike Griffin, Nichole & Jerrell Ingalls, Jessica & Tyler Jayne, Dale Kegley, Jennifer Kern & Liz Bainter, Avani Lange, Nadine & Matt Liberatore, Patrick MacKelvie, Ted & Terri Martino, Paul McAnelly & Lin Bowman, Moira McKenna & Ian Stoy, Naphtali & John Miller, Mariza Mozee-Rose, Katherine Parentice, Jennifer & Jason Peterson, Victoria & Matthew Pittman, Travis & Toni Ramme, Amber Reed, Tawnya Reilly & Brad Davis, Steve & Hollie Roman, Jessica Schmidt & Trevor Diamond, Nicholas & Jessica Schultz, Naghma Shaheen & Adil Akhtar, Clint & Candace Simpson, Heather & Sean Smiley, Kathy Thomas & Troy Attebury, Cynthia & Jenna Tittelfitz, Nicholas & Krystal Tullar

Copyright © 2016. All Rights Reserved.

2300 Leo Harris Parkway, Eugene, OR 97401

SafeUnsubscribe™ sfmarketing@sciencefactory.org

[Forward this email](#) | [Update Profile](#) | [About our service provider](#)

Sent by sfmarketing@sciencefactory.org

No virus found in this message.

Checked by AVG - www.avg.com

Version: 2016.0.7596 / Virus Database: 4565/12177 - Release Date: 05/06/16